

Operating instructions, worksheet**BA 1750-5****Conductivity probe
baelz 1750-5****Danger and warning instructions****Avoidance of danger for persons and materials.**

Only use unit for intended purpose.
No additional mountings and modifications on the unit without our approval.
Adhere to the rules for prevention of accidents and to the plant specific safety regulations.
Read and observe installation and operating instructions.

Application limits

Only use this unit according to these operating instructions and to the parameters agreed upon in the delivery contract (see identification plate) including the agreed operating conditions.

Avoidance of danger and damages

Supply these mounting and operating instructions to appropriate department "arrival of goods, works transport, mounting and commissioning".
When passing the unit to a third party, these operating and mounting instructions must be enclosed in the national language of this third person.
Only skilled and qualified personnel with special work order may work on the unit.
Read and observe mounting and operating instructions.

Observe and adhere to the precautions marked in bold characters in the sections of these mounting and operating instructions.

Avoid shocks and impacts during transport which could damage to the unit.
In case of intermediate storage, take care for a dry and appropriated place where the unit can not be damaged.

For disassembling, the plant has to be at atmospheric pressure.

Wait until the unit has cooled.

Operating instructions, worksheet**BA 1750-5****Assembly of probe**

Loosen screw (1) and remove socket (2).
Check if sealing surface are clean and undamaged
Insert joint gasket (6).
Grease thread (7) with heat resistant lubricant
(i. e. graphite).
Screw in and fasten probe.
Max. tightening torque $M_d=140 \text{ Nm}$.

Caution:

Check bolts of probe in flange during boiler commissioning and retighten if necessary.

Mounting of socket (2)

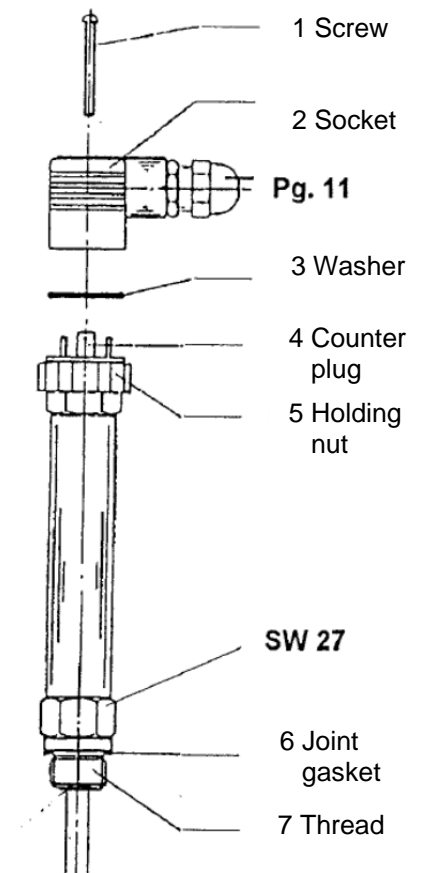
If socket (2) cannot be mounted because of disorientated counter plug (4) proceed as follows:

Loosen holding nut (5) to lift counter plug (4).
Turn counter plug (4) into desired position and snap in.
Retighten holding nut (5).
Place socket (2) and fix with screw Schraube (1).
(Take care of washer (3)!

Remark

**Never apply heat insulation to probe head
(all parts located above thread (7))!**

See enclosed wiring diagram for electrical connection.

**Caution !**

Never shorten or elongate the probe.

Operating instructions, worksheet
BA 1750-5
Application and function

The level probe 1750-5 in connection with the controller 1753 and a desalting valve is a continuous desalting regulation.

Technical basic equipment

Mechanical connection	G ½ (SW27 with T-connection for mounting on boiler)	
Electrical connection	Plug connection with screw terminals, traction relief	
Material	Probe housing	Stainless steel
	Probe rod	Stainless steel
	Insulator	PTFE
	Socket	Polyamid
	Sealing ring	Soft iron
	T-connection	1.0460

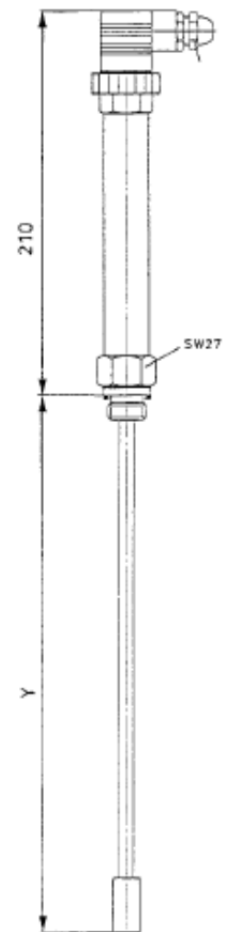
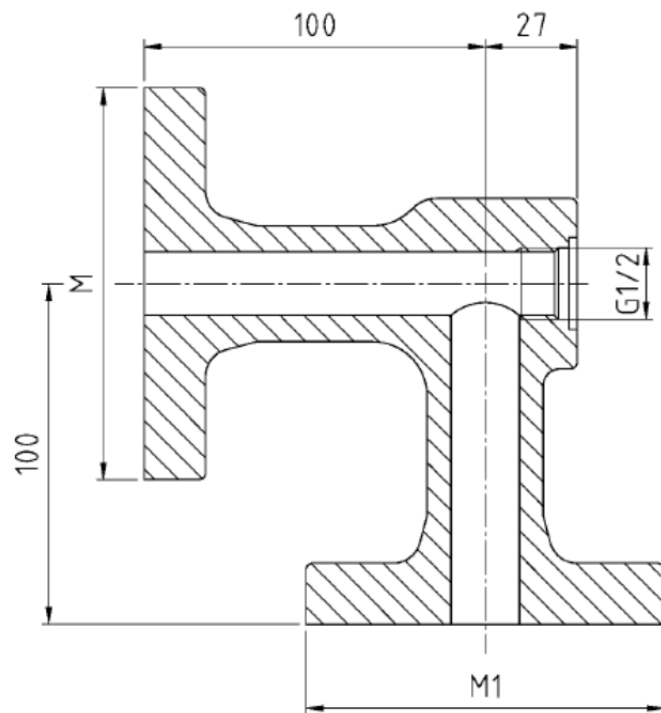
Technical data

Allowable pressure	PS (bar)	32
Allowable temperature	T (°C)	239
Cable gland		M 16x1,5
Protection as per DIN VDE 0470		IP65
Allowable temperature on gland		100°C
Installation		Vertical and inclined up to 90°

CAUTION!

Never shorten or prolong the probe





PN	Prozess connection M		Connection desalting valve M1	
	DN	DIN 2535 Form B	DN	DIN 2535 Form B
40	20	DIN 2535 Form B	15	DIN 2535 Form B
	25		20	

