

## baelz 475

### DESCRIPTION

The Jetomat baelz 475 is an economical water/water ejector with red brass housing and threaded connection for heating systems.

Housing: red brass CuSn5Zn5Pb5-C

Diffuser: brass

Plug stem and nozzle: stainless steel

### TECHNICAL SPECIFICATIONS

The plug type and the control characteristic are designed and manufactured to order.

Stroke: 6 mm

Weight without actuator: approx. 1.3 kg

Connection thread for actuator: M 30 x 1.5 mm

Working media: water

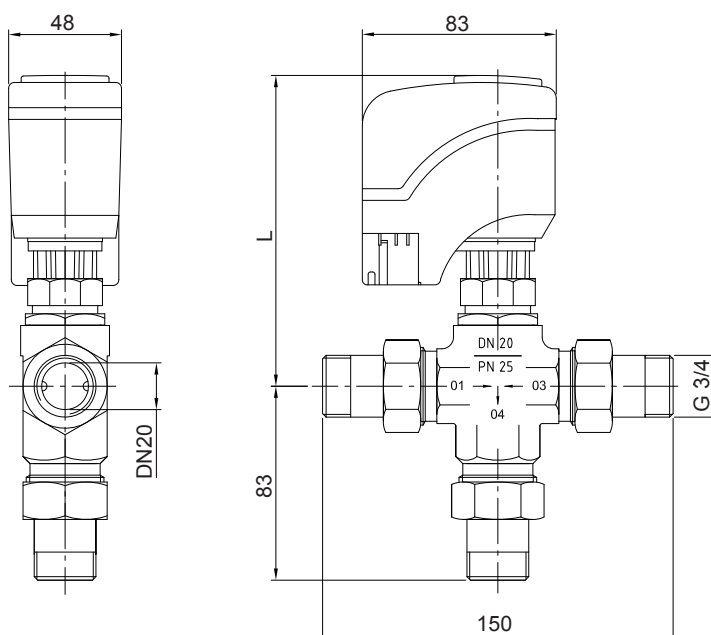
Designation	Nominal pressure	Housing material	Nominal diameter	Connection	Leakage class (EN 1349)
<b>baelz 475</b>	PN 16 / 25	Red brass CuSn5Zn5Pb5-C	3/4"	External thread with union nut made of brass and weld-on sockets made of steel	metal-to-metal seal 0.004% Kvs (better than class IV)

T max. (°C) / P max. (bar)	
Housing material	Red brass CuSn5Zn5Pb5-C
Nominal pressure	<b>PN 16 / 25</b>
<b>baelz 475</b>	110 / 16
	110 / 25
<b>baelz 475-K*</b>	150 / 16
	150 / 25
<b>baelz 475-SM-373-E01-UC8</b>	90 / 10

\*475-K: with cooling insert

Kvs and nozzle diameter (mm)					
Kvs	0.8	1.6	2.6	3.5	6.25
Ø	2.5	2.5	2.5	2.5	2.5
		3.5	3.5	3.5	3.5
			5	5	5
				6.5	6.5
					8

Length, L of baelz 373-ESI actuators (mm)	
Designation	L
<b>ESI-31</b>	107
<b>ESI-31.1</b>	124
<b>ESI-61</b>	107
<b>ESI-81</b>	107
<b>ESI-81.1</b>	124



baelz 475 with electric actuator 373-ESI dimensions