



# Inquiry Form

## Desuperheater Jetomat® baelz 590

### Compression / Recirculation



Please fill in this form as thoroughly and accurately as possible so that we can provide you with a suitable quotation promptly. Many thanks.

<b>Inquiry date</b>	
<b>Quote Date</b>	

### 1. Sender

<b>Company</b>	
<b>Address</b>	
<b>Contact</b>	
<b>Email</b>	
<b>Telephone</b>	



### 2. Technical Data

<b>Connections</b>	DIN-Flange		
<b>Housing material</b>	Spher. ductile iron	Steel	Stainless steel
<b>Subject to the selection of the Baelz material with regard to strength</b>			
<b>System pressure (barabs)</b>	Operation: .....	Min.: .....	Max.: .....
<b>Temperature(°C)</b>	Operation: .....	Min.: .....	Max.: .....
<b>For replacement or additional purchases:</b>			
<b>Specifications, in case of replacement</b>	Nominal diameter DN	Nominal pressure PN	nozzle

### 3. Configuration parameters

(see Page 2: Difference between recirculation / compression)

Medium steam	Motive steam 01	Suction steam 03	Output steam 04
<b>Pressure (barabs)</b>			-
<b>Quantity (kg/h)</b>			
<b>Temperature (°C)</b>			-
<b>Isentropic exponent</b>			-
<b>Density (kg/m³)</b>			-

only if there is  
no saturated  
steam at 01

AF\_DampfdrumpfenJetomat\_590\_01\_DE\_JMA\_1925



# Inquiry Form

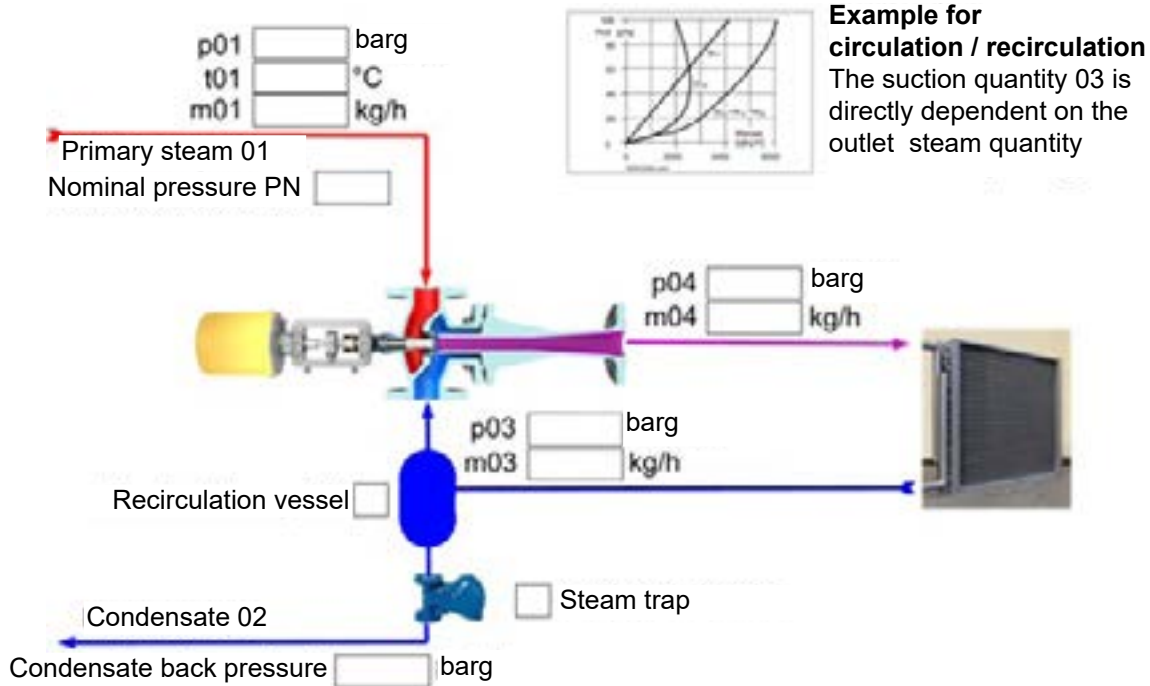
## Desuperheater Jetomat® baelz 590

### Compression / Recirculation



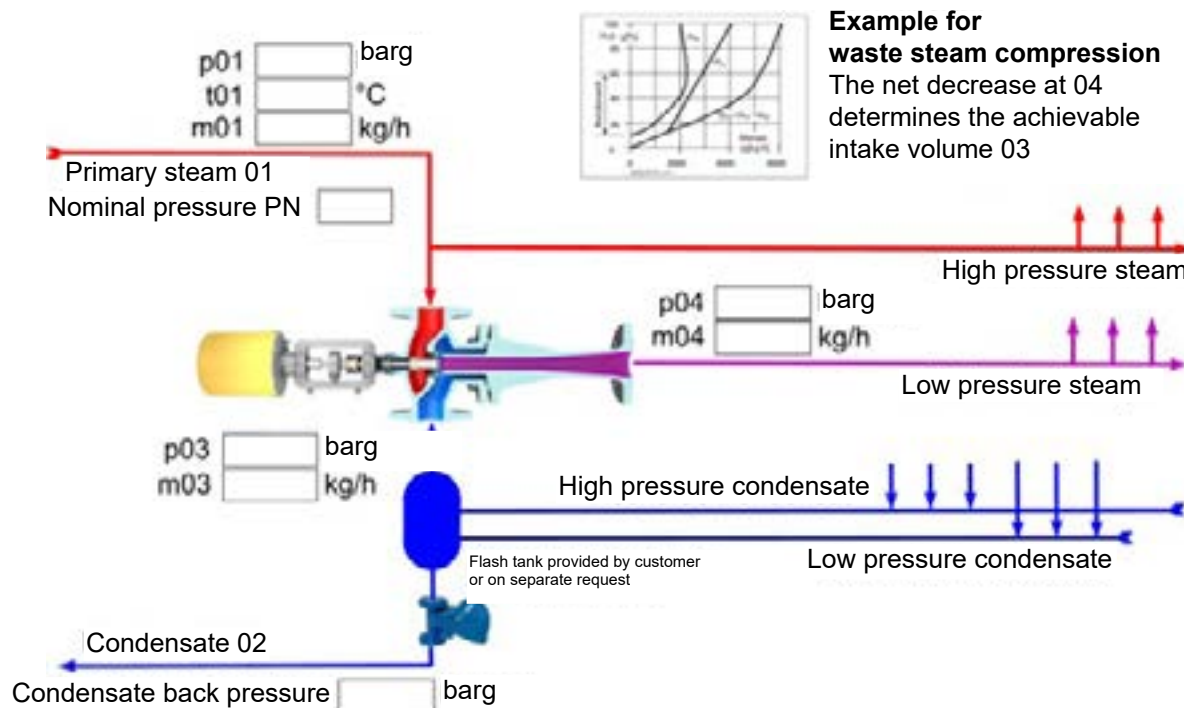
### 3.1 Dimensioning parameters recirculation

p01, p04, p03 and 1 quantity are mandatory fields for the design



### 3.2 Dimensioning parameters waste steam compression

p01, p04, p03 and 1 quantity are mandatory fields for the design



AF\_DampfstrumpfenJetomat\_590\_00\_DE\_JMA\_1925



# Inquiry Form

## Desuperheater Jetomat® baelz 590

### Compression / Recirculation



#### 4. Actuator

Electric → 4.1	Pneumatic → 4.2	Manual operation	Without actuator
----------------	-----------------	------------------	------------------

#### 4.1 Electric drive

<b>Supply voltage</b>	230V, 50/60Hz	115V, 50/60Hz	24V, 50/60Hz	400V, 50/60Hz
<b>Fail-safe function</b>	NO	YES: in case of power failure straight way		closed open
<b>Control</b>	open/close	3-point step	0/2...10 V	0/4...20 mA
<b>Actuation speed</b>	slow (6 mm/min)	medium (18mm/min)	fast (30-130 mm/min)	
<b>Accessories</b>				
<b>Position feedback</b>	0/2...10 V	0/4...20 mA	Potentiometer, Ω range	
<b>Additional limit switches</b>	stroke-dependent	<b>Baelz controller incorporated in the actuator</b>		
<b>Remarks</b>				

#### 4.2 Pneumatic drive

<b>Compressed air pressure available, barg</b>				
<b>If air supply fails</b>	straight way closed		straight way open	
<b>Control</b>				
<b>Pneumatic</b>	Set pressure range:	barg		
<b>electric, positioner</b>	0/2...10 V	0/4...20 mA	with safety solenoid valve fitted	
<b>electric, solenoid valve</b>	open/close with solenoid valve	3-point step with solenoid valve combination	3-point step with fail-safe function	
<b>Solenoid valve supply</b>	230V, 50/60Hz	115V, 50/60Hz	24V, 50/60Hz	24 V DC
<b>Accessories</b>				
<b>Position feedback</b>	0/2...10 V	0/4...20 mA	Potentiometer, Ω range	
<b>Limit switches</b>	open	close	open and close	
<b>Remarks</b>				

AF-Dampfheizer Jetomat 590 00 DE-IMA 1995

