

**Industry:** Pharmaceutical  
**Company:** Manufacturer of pharmaceutical goods  
**Location:** Germany, region West  
**Baelz Technology:** Steam Terminal®

### WANT TO SAVE ENERGY?

A leading pharmaceutical company is planning to invest around 275 million euros in a highly automated model factory, one of the most modern production facilities for pharmaceuticals in the world. Thanks to the modular design, it is possible to quickly expand production or carry out changeovers. Drugs for the treatment of cancer and cardiovascular diseases are to be manufactured here.



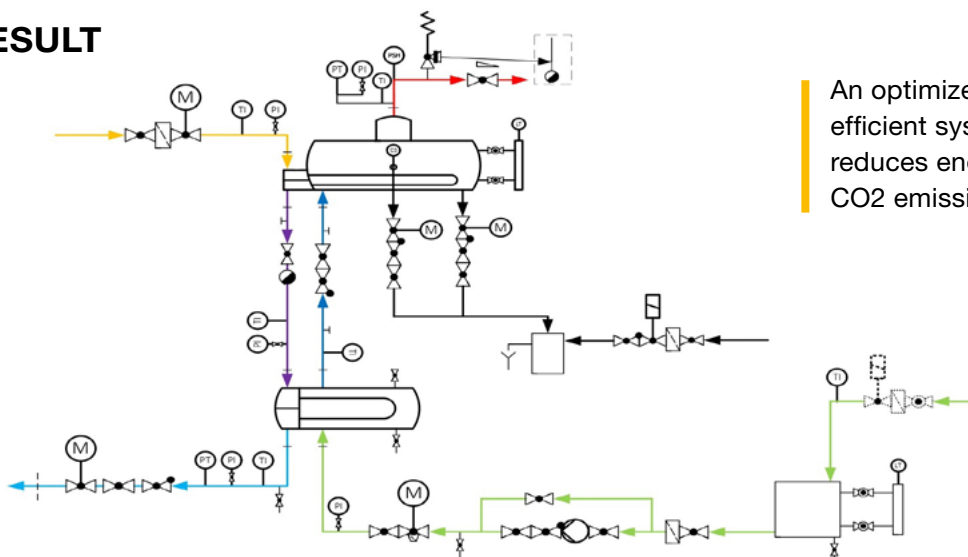
### BAELZ OFFERS SOLUTIONS.

A Baelz pure steam generator station has been designed to provide live steam for the manufacture of pharmaceuticals in the new production building. Sophisticated control and safety functions as well as an integrated automatic desalination and blow-down system ensure smooth and economical operation.

The main component of the station is a heat exchanger in which saturated steam, for example, is channelled through the tube bundle inside the shell. The vessel around the pipes contains the medium to be heated, to which heat is transferred. There is no risk of contamination as the two media never come into contact with each other.



### RESULT



An optimized and highly efficient system which reduces energy costs and CO2 emissions.

