

Industry: Paper
Company: Corrugated cardboard manufacturer
Location: Guangdong Province, China
Baelz Technology: Controlled steam ejectors Jetomat®

ORIGINAL SITUATION

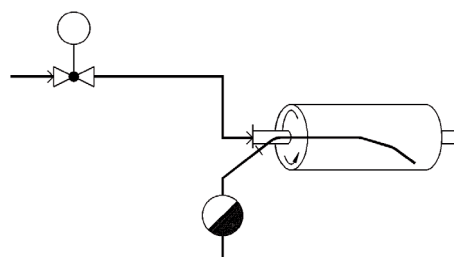
The dryer section of a paper machine consisting of individual drum dryers controlled by a valve.

Parameters:

P01 = 15 bar

P02 = 6.5 bar

M01 = 3200 kg/h



TECHNICAL ENHANCEMENT

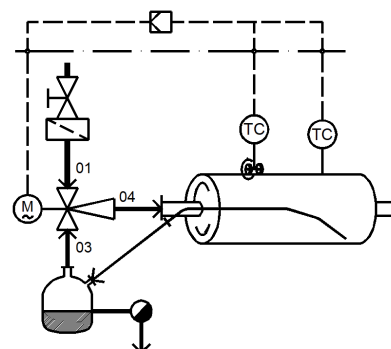
The control valves were replaced with baelz 590 steam ejectors.

Current parameters:

P01 = 15 bar

P03 = 6 bar

P04 = 6.5 bar



SAVINGS

According to the end customer, approx. 15% steam is saved.

Steam consumption per ton of paper before retrofit: 2.6 t

Steam consumption per ton of paper after retrofit: 2.2 t

ADVANTAGES OF STEAM EJECTOR TECHNOLOGY

Use of a controlled steam ejector instead of a control valve improves the performance of the consumer in the following respects:

- higher average steam velocity in the drum
- thinner condensate layer in the drum makes for uniform heat distribution and better drying quality
- increased production speed
- reduced steam consumption



FS_Papier2-590_00_DEC_MJ_4323

